

MCX Source Load

Defense Distribution Center (DDC)

For all orders shipping to OCONUS locations that qualify as a Release Unit.

Release Unit is a shipment unit of a specific commodity, weight, size, or mode that requires an export release from the Port Authority before shipment. A release unit generally contains one or more of the following characteristics: (1) cargo in lots of 8,000 pounds or more; (2) cargo in lots of 800 cubic feet or more; (3) cargo loaded to 8 or more pallets; (4) cargo is classified, explosive, poisonous, or in need of protective or security measures; (5) cargo occupies or is tendered as a full TL.

BOOKING PROCESS:

1. VRS FORM:

The vendor/shipper fills out the VRS form and sends it into the delivery@dla.mil mailbox.

POC:

delivery@dla.mil

Office: 1-800-456-5507

Fax: 717-770-2701

Copy all communications to:

Scot Osborne

Traffic Management Specialist

Office: 717-770-5534

Fax: 717-770-2701

Scot.osborne@dla.mil

What must be included on this form?

- Vendor's name
- Vendor's shipping address
- Vendor's email address
- Vendor's POC
- Vendor's phone number
- Vendor's fax number
- Date the material is available for loading
- The military destination Department of Defense Activity Addressing Code (DODAAC) – see last page
- Transportation Control Number (TCN) – see last page

- Transportation Account Code (TAC) – see last page
- Number of containers
- Type of container(s) (i.e. dry, reefer, highcube, or combination of reefer/highcube)
- Temperature if it is a refrigerated load
- Commodity being shipped
- Weight
- Cube
- Pallet Quantity or Piece Count

Prior to loading, the vendor/shipper, may not know the weight, cube, and quantity. When this information becomes available, forward it to DDC so that the processing of the Transportation Control Movement Document (TCMD) can be completed.

2. BOOKING:

DDC has 24 hours upon receipt of the VRS to enter the booking. Once the request is received, the booking is entered into Integrated Booking System (IBS). Surface Deployment and Distribution Command (SDDC) in Ft. Eustis VA will book the request with an ocean carrier. It is at this point that a Port Call File Number is assigned and will be used as a reference number throughout the process. It is imperative that the vendor/shipper documents this number. When IBS generates the booking, the carrier accepts the booking and although it is usually completed within 24 hours, it could take up to 72 hours for carrier acceptance. DDC will then send via email to the vendor/shipper the shipping information referred to as shipping instructions. The Shipping Instructions will include:

- PCFN
- Carrier booking number
- Number of containers
- Container TCN(s)
- Container size(s)
- Container type(s)
- Container temperature(s)
- Ocean carrier
- Vessel name
- Voyage document number
- Scheduled pick up date
- Date due at port (port cutoff date)
- Scheduled sail date
- Point of de-embarkation (POD)
- Arrival date
- Point of embarkation (POE)
- Ultimate consignee
- Vendor cage code
- Vendor shipping address

3. SUBSISTENCE:

If this is a subsistence (food items) shipment, DDC will email you the shipping instructions and request the following information from you:

- Container number food is loaded to
- Container ownership 4 digit code (i.e. Maersk~MSKU or MRKU)
- Seal number
- Commodity being shipped
- Pieces
- Weight
- Cube
- Declared value of the shipment

The declared value is mandatory for customs paperwork and is required to complete the TCMD. When you receive the following information, immediately forward to DDC so the TCMD can be produced. Once the required information is received then the TCMD is produced via electronic document interface (EDI) and the TCMD is sent to the carrier.

4. NON-SUBSISTENCE:

If this is a non-subsistence (non-food items) shipment, DDC will email you the shipping instructions and request the following information from you:

- Container number goods are loaded to
- Container ownership 4 digit code (i.e. Maersk~MSKU or MRKU)
- Commodity being shipped
- Pieces
- Weight
- Cube
- Declared value of the shipment

Once DDC receives the above info, they will provide a bolt style seal Radio Frequency Identification Device (RFID) tag for each container and six copies of the TCMD paperwork sent via priority overnight FedEx delivery to the vendor/shipper. The RFID tag must be attached to the container(s) before being released from the vendor/shipper custody to the contracted tractor trailer driver.

5. THE FEDEX PACKAGE:

The fedex package will contain RFID tags, bolt style seals, cable seals to go through the latches of both doors, four copies of the TCMD stapled in a separate packet for the truck driver, two copies stapled for the vendor, and one container Military Shipping Label (MSL) stapled with instructions to attach to the container.

6. CONTAINER INFORMATION:

The ocean carrier commits to the booking and their dispatch office contacts a trucking company to pick up a container and deliver to the vendor. The trucking company will

contact the vendor for arrangement of the movement of the container to and from the vendor. This kind of shipment is called a drop & pick, which means that the container is dropped at the shipping facility for loading and scheduled for pickup at a later time. If the vendor/shipper facility only does live loads, it is imperative that you share this information with DDC and also with the trucking carrier when they contact you.

7. RAIL SERVICE:

Container shipments traveling long distances to the ports may be shuttled via the rail system. This is determined and established by the ocean carrier's dispatch office. The DDC does not provide rail cut off dates or any contact with the rail system. The DDC only incorporates extra days for rail movement in the building of the booking.

TCN Number:

The TCN number will be created by Landair and entered on the booking request prior to sending to the shipper and then on to FISC, preferable via email, or with proper notification, fax. Each container, even if they are part of the same order, will have a TCN number. The TCN number must follow the following format:

DODAC + Julian date (date order placed) + first 4 digits of the PO + container count info

Example: PO123456 ordered on 4 Feb 2009 shipping to Iwakuni needs 1 container =
TCN# M95162035091234XXX

Example: POKBM863001 ordered on 5 Jul 2009 shipping to Kaneohe needs 2 containers
= TCN# M95115186098630XAX & M95115186098630XBX

Definitions:

Iwakuni DODAC: M95162
Kaneohe DODAC: M95115

Date order placed is the date of the purchase order.

Julian date: Date Order placed (from PO) – DDDYY Ex: Jan 1st 2009 would be - 00109

See last page for Julian date chart

Container count:

XXX represents container count when only one container is being moved

For multiple containers:

XAX represents first container
XBX represents second container
XCX represents third container
XDX represents fourth container, etc

TAC code required for booking request form:

Iwakuni: MCX0
Kaneohe: MCX0

Line of Accounting:

FY 10 LOA:

17 20092009 1106 27T0 00027 MCX920090000 M00088 220 M0008809CB0ST09 AA
067443 2D MCX0

SDN: M0008809CB0ST09

DDC POC:

Scot Osborne
Traffic Management Specialist
Office: 717-770-5534
Fax: 717-770-2701
Scot.osborne@dla.mil

Landair POC:

Nyki Lamons
866-404-8517 phone and fax
nlamons@landair.com
Web Portal: <http://mcx.landair.com:8081>

Delivery@dla.mil

Office: 1-800-456-5507
Fax: 717-770-2701

MCX Operations:

Kimberly DuPriest
Operations Program Assistant
703-432-1298
703-784-2710
dupriestk@usmc-mccs.org

Kaneohe Bay POC:

Boyd Tokuhiga or Dino Frosinos
Boyd.Tokuhiga@usmc-mccs.org
FROSINOSD@usmc-mccs.org

Iwakuni POC:

Takeaki Hayashi or Gator Allgaier
Takeaki.Hayashi@usmc-mccs.org
Gator.Allgaier@usmc-mccs.org

Marine Corps Exchange
Marine Corps Base Hawaii
Building 1404
Kaneohe Bay, HI 96863-3073

Marine Corps Exchange
Marine Corps Air Station Iwakuni
PSC 551 Box 1866
FPO AP 96310-0019

Julian Calendars

Regular years:

(2001, 2002, 2003, 2005, 2006, 2007, 2009, 2010, ...)

	Jan	Feb	Mar	Apr	May	Jun	Jul	Aug	Sep	Oct	Nov	Dec
1	1	32	60	91	121	152	182	213	244	274	305	335
2	2	33	61	92	122	153	183	214	245	275	306	336
3	3	34	62	93	123	154	184	215	246	276	307	337
4	4	35	63	94	124	155	185	216	247	277	308	338
5	5	36	64	95	125	156	186	217	248	278	309	339
6	6	37	65	96	126	157	187	218	249	279	310	340
7	7	38	66	97	127	158	188	219	250	280	311	341
8	8	39	67	98	128	159	189	220	251	281	312	342
9	9	40	68	99	129	160	190	221	252	282	313	343
10	10	41	69	100	130	161	191	222	253	283	314	344
11	11	42	70	101	131	162	192	223	254	284	315	345
12	12	43	71	102	132	163	193	224	255	285	316	346
13	13	44	72	103	133	164	194	225	256	286	317	347
14	14	45	73	104	134	165	195	226	257	287	318	348
15	15	46	74	105	135	166	196	227	258	288	319	349
16	16	47	75	106	136	167	197	228	259	289	320	350
17	17	48	76	107	137	168	198	229	260	290	321	351
18	18	49	77	108	138	169	199	230	261	291	322	352
19	19	50	78	109	139	170	200	231	262	292	323	353
20	20	51	79	110	140	171	201	232	263	293	324	354
21	21	52	80	111	141	172	202	233	264	294	325	355
22	22	53	81	112	142	173	203	234	265	295	326	356
23	23	54	82	113	143	174	204	235	266	296	327	357
24	24	55	83	114	144	175	205	236	267	297	328	358
25	25	56	84	115	145	176	206	237	268	298	329	359
26	26	57	85	116	146	177	207	238	269	299	330	360
27	27	58	86	117	147	178	208	239	270	300	331	361
28	28	59	87	118	148	179	209	240	271	301	332	362
29	29		88	119	149	180	210	241	272	302	333	363
30	30		89	120	150	181	211	242	273	303	334	364
31	31		90		151		212	243		304		365

Leap years:

(1988, 1992, 1996, 2000, 2004, 2008, 2012, ...)

	Jan	Feb	Mar	Apr	May	Jun	Jul	Aug	Sep	Oct	Nov	Dec
1	1	32	61	92	122	153	183	214	245	275	306	336
2	2	33	62	93	123	154	184	215	246	276	307	337
3	3	34	63	94	124	155	185	216	247	277	308	338
4	4	35	64	95	125	156	186	217	248	278	309	339
5	5	36	65	96	126	157	187	218	249	279	310	340
6	6	37	66	97	127	158	188	219	250	280	311	341
7	7	38	67	98	128	159	189	220	251	281	312	342
8	8	39	68	99	129	160	190	221	252	282	313	343
9	9	40	69	100	130	161	191	222	253	283	314	344
10	10	41	70	101	131	162	192	223	254	284	315	345
11	11	42	71	102	132	163	193	224	255	285	316	346
12	12	43	72	103	133	164	194	225	256	286	317	347
13	13	44	73	104	134	165	195	226	257	287	318	348
14	14	45	74	105	135	166	196	227	258	288	319	349
15	15	46	75	106	136	167	197	228	259	289	320	350
16	16	47	76	107	137	168	198	229	260	290	321	351
17	17	48	77	108	138	169	199	230	261	291	322	352
18	18	49	78	109	139	170	200	231	262	292	323	353
19	19	50	79	110	140	171	201	232	263	293	324	354
20	20	51	80	111	141	172	202	233	264	294	325	355
21	21	52	81	112	142	173	203	234	265	295	326	356
22	22	53	82	113	143	174	204	235	266	296	327	357
23	23	54	83	114	144	175	205	236	267	297	328	358
24	24	55	84	115	145	176	206	237	268	298	329	359
25	25	56	85	116	146	177	207	238	269	299	330	360
26	26	57	86	117	147	178	208	239	270	300	331	361
27	27	58	87	118	148	179	209	240	271	301	332	362
28	28	59	88	119	149	180	210	241	272	302	333	363
29	29	60	89	120	150	181	211	242	273	303	334	364
30	30		90	121	151	182	212	243	274	304	335	365
31	31		91		152		213	244		305		366

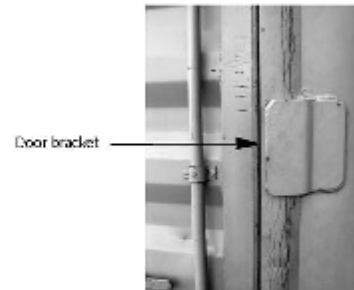
<u>Vendor Name:</u>	<u>To:</u> Defense Distribution Center (DDC) New Cumberland, PA 17070 Email: delivery@dla.mil Com: 1-800-456-5507 Fax: 717-770-2701	
<u>Vendor Address:</u>	<u>Vendor Email:</u>	
<u>Vendor POC:</u>	<u>Vendor POC Phone Number:</u>	
<u>Date Material Available for Loading:</u>	<u>Vendor POC Fax Number:</u>	
<u>Destination DODAAC:</u>	<u>Transportation Control Number (TCN):</u>	
<u>Number of Dry Containers:</u>	<u>Size:</u>	<u>TAC:</u>
<u>Number of High Dry Cube Containers:</u>	<u>Size:</u>	<u>Product/Commodity:</u>
<u>Number of Reefer Containers:</u>	<u>Size:</u>	<u>Temperature:</u>
<u>Number of High Cube Reefer Containers:</u>	<u>Size:</u>	<u>Temperature:</u>
<u>Vendor Reference PO Number:</u>	<u>Weight, Cube, & Quantity:</u> (If Known)	

Tag Placement

Savi Technology recommends that you fit the Savi ST-656-I ISO Container Door Tag above the door bracket and on the left-hand door of the container. The recommended mounting location for the tag is shown in the following photos.



1. Open the right door of the container.
2. Align the device with the bracket on the right door, if possible.



3. Using both hands, secure the device on the left door until it is flush.

This is a side view of the device mounted on the left door.



This is a view from inside the container.



OCEAN CONTAINER SPECIFICATIONS

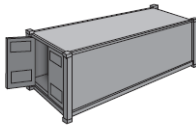
The following dimensions and weights are offered as average indicators. Exact dimensions may vary due to manufacturer of equipment. Maximum capacity weights listed do not correspond to the permissible weight limits for port, road and rail transport in all locations. Loaded containers rarely weigh more than 50,000 lbs.

DRY CONTAINERS

Suitable for normal cargos.

Fitted with bar systems for Garment on Hanger (GOH) cargos in some inventories/trade lanes.

20' STANDARD



INTERIOR DIMENSIONS			DOOR OPENINGS		MAXIMUM CAPACITY		TARE WEIGHT
LENGTH	WIDTH	HEIGHT	WIDTH	HEIGHT	VOLUME	WEIGHT	
19' 4"	7' 8"	7' 10"	7' 8"	7' 6"	1,172 Cft	47,900 Lbs	4,916 Lbs
5.90 m	2.35 m	2.39 m	2.34 m	2.28 m	33.2 Cu.m	21,700 Kgs	2,230 Kgs

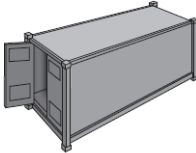
40' STANDARD

INTERIOR DIMENSIONS			DOOR OPENINGS		MAXIMUM CAPACITY		TARE WEIGHT
LENGTH	WIDTH	HEIGHT	WIDTH	HEIGHT	VOLUME	WEIGHT	
39' 5"	7' 8"	7' 10"	7' 8"	7' 6"	2,390 Cft	59,040 Lbs	8,160 Lbs
12.04 m	2.35 m	2.39 m	2.34 m	2.28 m	67.7 Cu.m	26,780 Kgs	3,700 Kgs

HIGH CUBE DRY CONTAINERS

Specifically for light, voluminous, or over-height cargo.

40' HIGH CUBE



INTERIOR DIMENSIONS			DOOR OPENINGS		MAXIMUM CAPACITY		TARE WEIGHT
LENGTH	WIDTH	HEIGHT	WIDTH	HEIGHT	VOLUME	WEIGHT	
39' 5"	7' 8"	8' 10"	7' 8"	8' 5"	2,694 Cft	58,450 Lbs	8,750 Lbs
12.04 m	2.35 m	2.70 m	2.34 m	2.59 m	76.3 Cu.m	26,510 Kgs	3,970 Kgs

45' HIGH CUBE

INTERIOR DIMENSIONS			DOOR OPENINGS		MAXIMUM CAPACITY		TARE WEIGHT
LENGTH	WIDTH	HEIGHT	WIDTH	HEIGHT	VOLUME	WEIGHT	
44' 6"	7' 8"	8' 10"	7' 8"	8' 5"	3,050 Cft	64,250 Lbs	8,550 Lbs
13.56 m	2.35 m	2.70 m	2.34 m	2.59 m	86.4 Cu. M	29,140 Kgs	3,880 Kgs

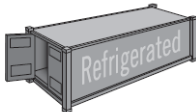
REEFER CONTAINERS

Specifically for cargo requiring transport at a constant temperature above or below a freezing point.

20' REEFER

INTERIOR DIMENSIONS			DOOR OPENINGS		MAXIMUM CAPACITY		TARE WEIGHT
LENGTH	WIDTH	HEIGHT	WIDTH	HEIGHT	VOLUME	WEIGHT	
17' 8"	7' 5"	7' 5"	7' 5"	7' 3"	1,000 Cft	45,760 Lbs	7,040 Lbs
5.43 m	2.28 m	2.26 m	2.26 m	2.22 m	28.3 Cu.m	20,800 Kgs	3,200 Kgs

40' REEFER



INTERIOR DIMENSIONS			DOOR OPENINGS		MAXIMUM CAPACITY		TARE WEIGHT
LENGTH	WIDTH	HEIGHT	WIDTH	HEIGHT	VOLUME	WEIGHT	
37' 8"	7' 5"	7' 2"	7' 5"	7' 0"	2,040 Cft	56,276 Lbs	10,780 Lbs
11.50 m	2.27 m	2.20 m	2.28 m	2.20 m	57.8 Cu.m	25,580 Kgs	4,900 Kgs

40' REEFER HIGH CUBE

INTERIOR DIMENSIONS			DOOR OPENINGS		MAXIMUM CAPACITY		TARE WEIGHT
LENGTH	WIDTH	HEIGHT	WIDTH	HEIGHT	VOLUME	WEIGHT	
37' 11"	7' 6"	8' 2"	7' 6"	8' 0"	2,344 Cft	57,561 Lbs	9,900 Lbs
11.58 m	2.30 m	2.50 m	2.30 m	2.44 m	66.6 Cu.m	25,980 Kgs	4,500 Kgs